



CONNECTICUT EARLY PSYCHOSIS
LEARNING HEALTH NETWORK

Transforming Access, Care Quality, and Outcomes

STEP

Early Psychosis Basics

Thursday 5.13.2021 | 2 – 3:30pm

REGISTER HERE!

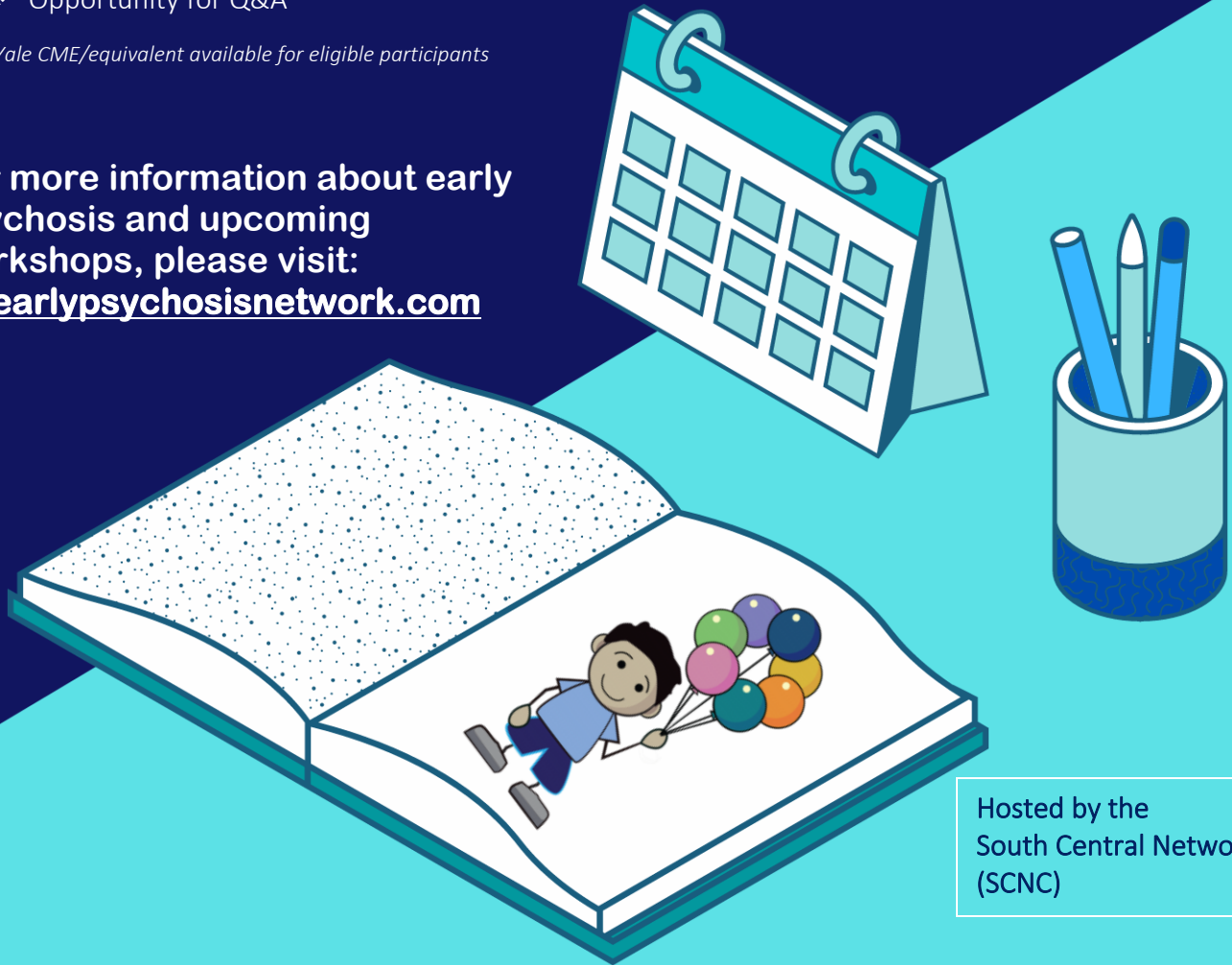
Laura Yoviene Sykes, PhD, psychologist at the program for Specialty Treatment Early in Psychosis (STEP) and Director of the Connecticut Early Psychosis Learning Health Network will lead a training and discussion on early psychosis.

Goals of the training include:

- ❖ Increase awareness and understanding of early psychosis
- ❖ Learn to recognize early warning signs of psychosis
- ❖ Develop awareness of assessment tools and strategies
- ❖ Connecticut Early Psychosis Learning Health Network overview
- ❖ Opportunity for Q&A

**Yale CME/equivalent available for eligible participants*

For more information about early psychosis and upcoming workshops, please visit:
CTearlypsychosisnetwork.com



Hosted by the
South Central Network of Care
(SCNC)

Connecting to Care is a partnership that focuses on coordinating access to quality care through a youth-guided and family-driven approach. To improve behavioral health outcomes for children in Connecticut, Connecting to Care seeks to change the way that the system operates so that all children have the opportunity to thrive.

CTC Connecting to Care